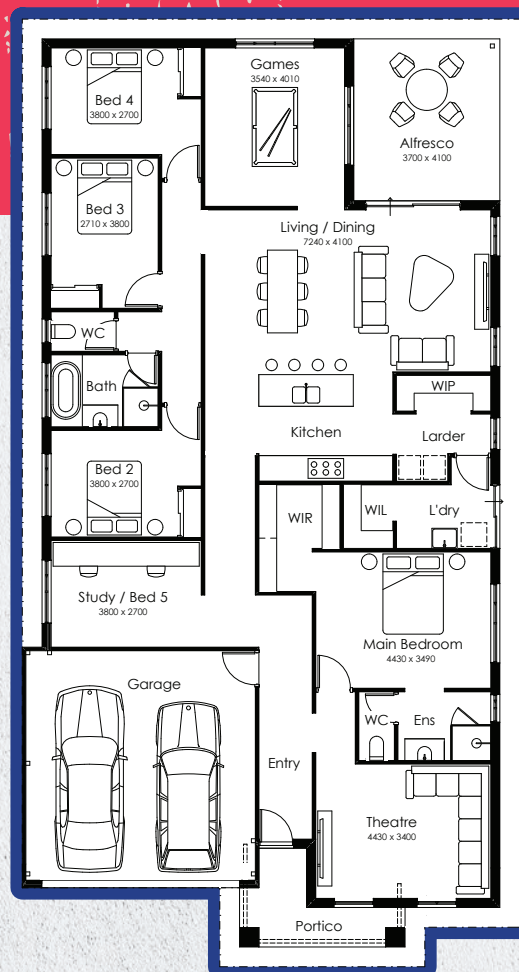




The *Seattle*

 5
  2
  2
  15

- ▶ The Seattle is a super spacious design with everything you need and more! The 4 bedrooms, and a study that can be turned into a 5th bedroom, are just the beginning.
- ▶ At the heart of the home, you'll find the epic open plan living/dining and kitchen area. We've also included a games room and alfresco that extend from the living areas; perfect if you like to entertain. Or, the games room could double as the kids' playroom – so many options.
- ▶ The key to any large home is plenty of storage, and the Seattle has it built in with a walk-in-wardrobe, walk-in-pantry and a walk-in robe in the main bedroom.



Total area: 259.60m²



easystart
homes

Powered by **SUMMIT**

Ready for home ownership?

LET'S do THIS
easystarthomes.com.au

There's many ways we can help

Ask us how!



FINANCE

- We help you receive eligible government-assisted finance, including the \$10,000 first homeowner's grant.
- We offer super low deposits, and ensure you receive the best possible home loan tailored to your budget.
- Haven't got a deposit yet? Ask about our finance programs.

LAND

- As a first step, we work with you to choose a location that suits your lifestyle and budget.
- Get access to the best blocks in popular suburbs before they hit the market.
- We offer a large range of exclusive, affordable House & Land packages all over Perth.

HOME

- Choose from a huge range of stunning homes designed to suit you.
- Your home comes packed with great inclusions as standard - so you don't need to compromise.
- Every Easystart home is built using the best materials and is backed by a 25-year structural warranty.

WHEN YOU SUM IT UP, SUMMIT COMES OUT ON TOP



Innovative building
methods



Locally owned & operated
for 45 years



WINNER
WA's Project Builder
of the Year 2022 & 2021



Inspiration made easy
at Style Studio



WA's Professional Major
Builder 2022, 2021 & 2020



Lifetime structural
guarantee



@easystarthomes

EASYSTARTHOMES.COM.AU



easystart
homes

Powered by **SUMMIT**