



The Athens

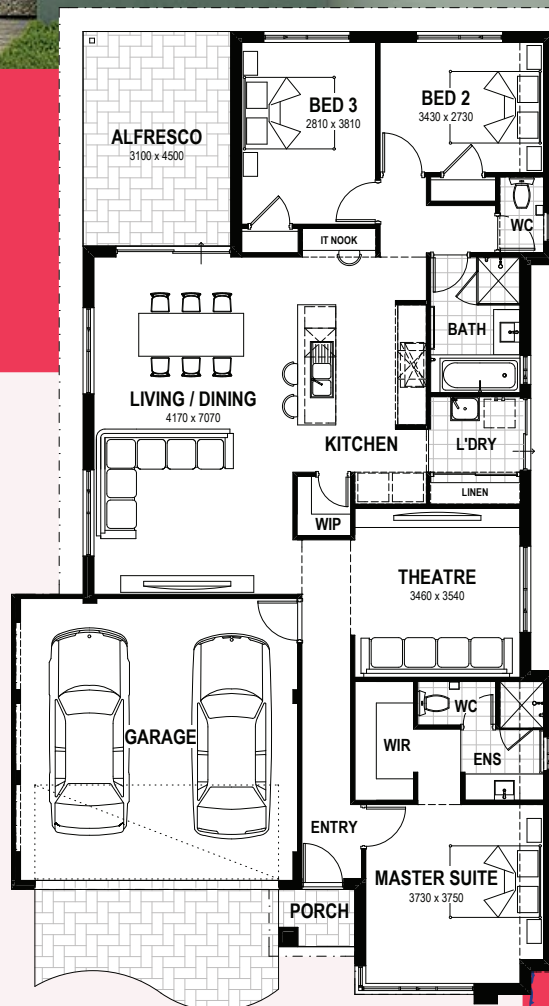
3

2

2

12.5m

- ▶ Be spoiled for space in this stunning modern home, with the large open plan living and dining area seamlessly flowing out onto the elongated alfresco.
- ▶ Overlooking this area the gourmet kitchen boasts a breakfast bar and walk-in pantry, with a clever IT nook just off to the side.
- ▶ Parents can enjoy the sanctuary of the deluxe main suite peacefully situated at the front of the home, featuring a generous walk-in robe and ensuite.
- ▶ At the rear of the home the children's wing encompasses two bedrooms and family bathroom, while the theatre offers a space the whole family can enjoy.



Total area: 193.94m²



easystart
homes

Powered by **SUMMIT**

Ready for home ownership?

LET'S do THIS

easystarthomes.com.au

Home ownership
made easy

LET'S *do* THIS



Finance to front door: We help sort your finance, find a block of land and select a home design.

Finance

We get it, everyone's money sitch is unique. Our friendly and experienced in-house finance team will look at your personal situation and recommend the best option that fits you.

Land

We work with you to choose a location that suits your lifestyle and budget. Through our extensive network of land developers, we can find you the perfect block of land before they hit the market

Home

Your home design should be inspired by your life. With Easystart, you're spoiled for choice with plenty of home designs, packed with great inclusions to suit you.

Strength of the Summit Homes Group



Locally owned & operated for over 45 years



WA's Project builder of the year 2022 & 2021



WA's professional Major Builder 2023, 2022, 2021 & 2020



[EASYSTARTHOMES.COM.AU](https://www.easystarthomes.com.au)

Truecore®



easystart
homes

Information correct as at February 2024. Perth metro area only. Summit Homes Group reserves the right to alter or amend the specification and/or design details due to non-availability or discontinuation, without prior notice. Images are for illustrative purposes only. BC10689.

Powered by **SUMMIT**